

The idea: Re-think – Re-organise.

WITH THE MANUFACTURING COMPETENCE OF THE HOFFMANN GROUP.

Visual order

The anthracite-coloured base plates stand out against the light-coloured perforated panels and thus create a high level of visual clarity. Horizontal and vertical structures are created, making it easier to find the correct tool. Optical clarity saves time and makes work more efficient.

Easy handling

The GARANT Easyfix hooks and holders can easily be fitted and, when necessary, be removed with just one hand. The required tool can thus be positioned exactly where it makes most sense from an ergonomic perspective.

Storage and removal

- Safe storage of sensitive tools such as measuring instruments or drills using special plastic hooks and holders.
- Safe removal of the tools is possible due to their clear arrangement.

Award-winning design

The GARANT Easyfix system received the coveted German Design Award.





Modular and universal

Whether perforated panel, concrete, wood, worktop or ladder: The hooks and holders, as well as the Multifix rail, can be attached to many different surfaces thanks to the system's modularity.

Durable and strong

All hooks and holders will retain their shape and do not bend, even under high loads. The holders are made of impact-resistant plastic.

Extensive range

Whether sensitive tools, larger tools / devices, or everyday objects for various fields of application. We have the right hook or holder:

- A large number of universally applicable steel wire hooks.
- Large variety of plastic holders shaped to accept specific tools.



Premium Quality by Hoffmann Group





Content

The idea

Re-think – Re-organise

With the manufacturing competence of the Hoffmann Group 02 – 03

The basic range

Overview of the range	06 – 07
Steel wire hooks and holders	08 – 11
Plastic hooks and holders	12 – 15

Extension of the range

Vario base holder.....	16 – 18
Wall mounting plate	19
Table base plate	20 – 21
Multifix rail	22 – 27
Shadowboards	28 – 29
Storage trays, open storage bins and boxes	30 – 31
Perforated panels	32 – 33

Real life

Ranging from the classic to the unconventional:

Examples from real life

34 – 47

The GARANT Easyfix system

AN ENDLESS NUMBER OF POSSIBILITIES FOR ATTACHING AND STORING TOOLS, AND FOR CREATING ORDER.

Storage

Extension of the range

Extension of the range – base plates

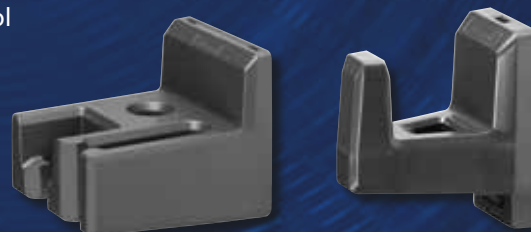
With the Vario base holder, wall mounting plate, table base plate and the Multifix rail we have increased your options for attaching and storing your tools.

The basics



Steel wire hooks and holders

A quick and easy to use tool storage system.



Plastic hooks and holders

For individual tool storage.



Attachment options

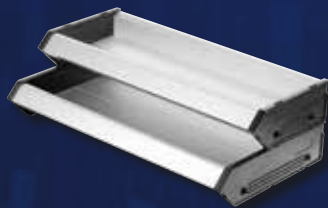
For all GARANT perforated panels

Consistent system for the whole GARANT workstations and storage range, like roller cabinets, workstations, workbenches, cupboards, assembly stools, etc.



Boxes and open storage bins

For storage of small parts.



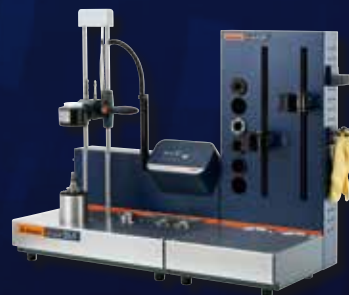
For GARANT ladders

Always have tools ready to hand even on top of a ladder.



Shadowboards

Suitable for our hard foam inlays.



For GARANT devices

Will also accept the GARANT Easyfix system.

The GARANT Easyfix steel wire hooks and holders

MODULAR, CONVENIENT AND INCREDIBLY STRONG!

First-class hook and base plate

- Convenient and easy to handle.
- Anthracite grey plastic.
- Absolutely abrasion-free and durable.
- Able to withstand high temperature fluctuations, does not become porous.

First-class material

- Stainless steel.
- Ø of 4 – 6 mm available.
- High rigidity, does not bend.





Well thought out system

- Easy attachment to perforated panels, to rails or direct fitting to walls with wall mounting plate.
- Wide variety and large choice.
- A solution to every problem.

Total safety

- Chamfered edge – therefore no risk of injury.
- High load capacity, no bending of the steel hooks.
- Perforated panel will not get scratched.
- Tools will not get caught.

Easy handling

- Simple to attach and release with just one hand!







The GARANT Easyfix steel wire hooks and holders

PROVIDE EXTENSIVE CHOICE AND NUMEROUS POSSIBLE COMBINATIONS.

1 Single steel wire hooks

Different lengths and angles for a wide variety of applications.



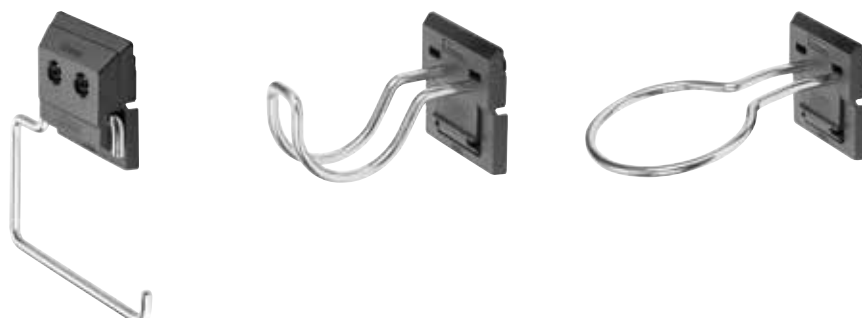
2 Double steel wire hooks

Hang tools from / rest tools on various lengths, widths and angles of open or closed steel wire hooks.



3 Special steel wire hooks

For special applications, like roll holder, pipe/cable holder and ring holder.



The GARANT Easyfix plastic hooks and holders

MODULAR, CONVENIENT AND INCREDIBLY STRONG!

Well thought out system

- Simple attachment to perforated panels, Multifix rail or direct fitting to a wall using the wall mounting plate.
- Wide variety and large choice of different hooks and holders.

First-class material

- Impact-resistant, unbreakable.
- Made of recyclable plastic PA6 GF20.
- No sharp edges.
- Absolutely torsion-resistant – high load capacity.





The right holder for every tool

- No rattling due to the precise fit of the tool in the appropriate plastic holder.
- Tool will not get scratched by the holder.
- High mechanical strength.

First-class hooks

- Functional and versatile use.
- Anthracite-grey plastic.
- Absolutely abrasion-free and durable.
- Does not become porous.
- Able to withstand temperature fluctuations.

Easy handling

- Plastic hooks and holders are supplied including a base plate.
- Simply click the base plate into the perforated panel, slide on the holder, ready.







The GARANT Easyfix plastic hooks and holders

TAILOR-MADE HOLDERS AND UNIVERSAL PLASTIC HOOKS.

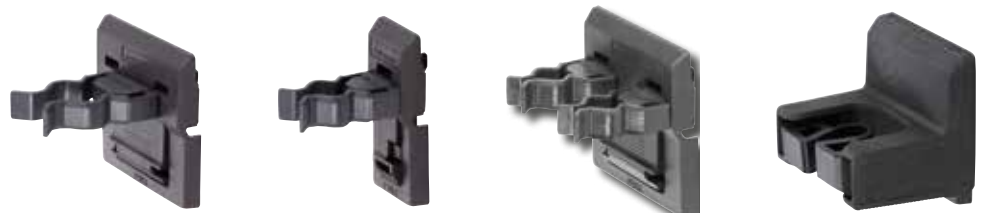
1 Universal plastic hooks

Different lengths, as single or double hook, suitable for various applications.



2 Plastic tool clips

With different clamp diameters, both rigid and flexible tool clips.



3 Special shape plastic holders

Perfectly matched to the tool to be stored. The tool cannot move around inside the holder / no rattling.



Pliers holder

Ratchet holder

Hose holder

Socket holder

Extended possibilities with the Vario base holder.

GIVES YOU EVEN MORE OPTIONS!

Numerous options for attachment

- Direct attachment to the wall (concrete, sheet metal or wood) and worktops.
- Attachment to perforated panels by fixing to a base plate (available separately).
- Increase the load capacity of the Multifix rail: by 10 kg per Vario base holder (max. 50 kg). This means that even 2000 mm long Multifix rails can be equipped without a problem.

Step by step tilting

- Can be tilted in 4 steps to an angle between 0 - 45°.
- Ergonomic, easily accessible storage of tools.





For convenient and individual attachment of

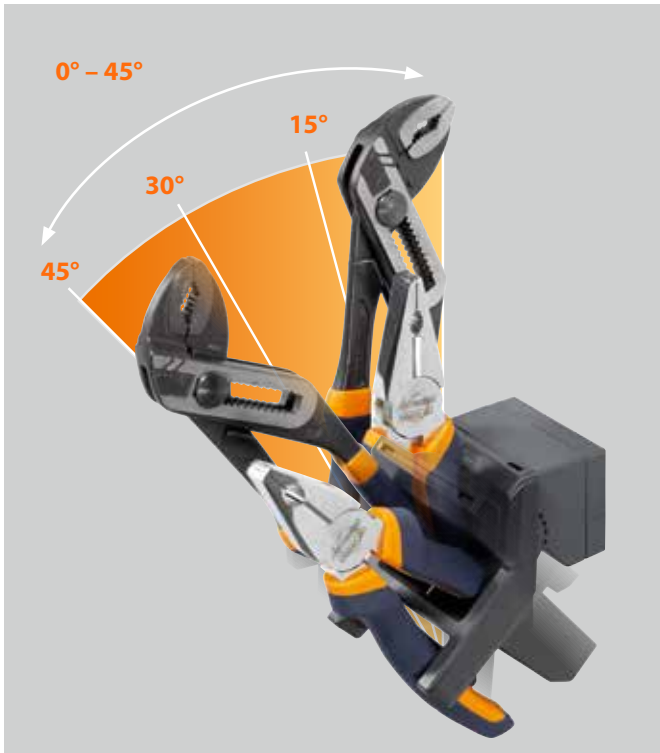
- Plastic holders
- Multifix rail
- Open storage bins (box holder required)
- Shadowboards

First-class quality and design

- Developed for the highest demands.
- Anthracite-coloured plastic – elegant and timeless.
- Absolutely abrasion-free and durable.
- Does not become porous, able to withstand temperature fluctuations.

More options with the Vario base holder.

ATTACHING, TILTING, INCREASING LOAD CAPACITY.



Tilting to an ergonomically advantageous position

The Vario base holder can be tilted to various angles from 0 – 45° in 4 steps (15° steps). Thus tools can be removed in an ergonomic, time-saving manner that will not damage your health.



Increased load capacity

Using the Vario base holder, the Multifix rail can also be fitted to a perforated panel at an angle, so that the required tools are always easily accessible, and can be removed in an ergonomic manner.

With up to a maximum of 5 Vario base holders the load capacity of the Multifix rail can be increased to 50 kg.

More options with the wall mounting plate.

SIMPLE ASSEMBLY FOR OPTIMUM HOLD.

Fixing a plastic hook/holder or the Multifix rail to a wall



1. Screw fixing >

Attach the wall mounting plate directly to the wall, whether concrete, brick, wood or metal.

2. Clip on >

The base plate can be fitted directly to the wall mounting plate.

3. Attach >

Plastic hooks/holders or the Multifix rail can be attached to the base plate.

4. Ready!

The Multifix rail can, in turn, be used for the attachment of Easyfix hooks and holders.

Attaching steel wire hooks to the wall



Spacer

For easy and perfect attachment of several holders next to each other.

1. Screw fixing >

Attach the wall mounting plate directly to the wall, whether concrete, brick, wood or metal.

2. Click + ready!

The Easyfix steel wire hook clips directly on to the wall mounting plate.

More options with the table base plate.

CREATES MORE MOBILITY AND SAFETY.



Mobile use

of tools is made easier:

Remove the tools in their respective holder from the table base plate and attach it e.g. to the Easyfix base plate on the GARANT ladder.



Table base plate + plastic holder

The table base plate is fitted directly to the worktop. The plastic holder is fitted to the table base plate, so that it cannot be accidentally pushed off the worktop.



Useful spacers

Any number of table base plates can be positioned next to each other on the worktop. Using the spacers it is thus also possible to attach several plastic holders shaped for specific tools next to each other.

The GARANT MULTIFIX rail – there's more to it than meets the eye.

OPTIONS FOR ATTACHMENT TO DIFFERENT SURFACES.



Support columns



Walls (concrete, wood, sheet steel)



Aluminium multifunctional rail

For the attachment of GARANT Easyfix hooks and holders, open storage bins, magnetic holders and Shadowboards, as well as the lighting unit. The lighting unit can, however, only be fitted if the Multifix rail is attached to support columns.



Perforated panel

Numerous options for attachment:

- Hooking into support columns.
- Directly on a perforated panel using the base plates.
- To walls (concrete, wood, sheet metal) using the wall mounting plate or the Vario base holder.

The GARANT Multifix rail – attachment to perforated panels or support columns

VARIOUS METHODS OF ATTACHMENT.



Simple attachment with the base plate

For attaching the Multifix rail to the perforated panel, two base plates are clicked into the required position on the perforated panel and the Multifix rail is then attached to the base plates.



Attaching to support columns

The GARANT Multifix rail can also be attached to the support columns by using the hooks supplied.



Possibility of tilting – two different angles

Ergonomic removal of tools by tilting the Multifunction rail in two steps:

In order to get tools, open storage bins or boxes into an ergonomic position for access, it is possible to hook the Multifix rail into the support columns at two different angles. It is very easy to do: Hook the Multifix rail into the support columns, slightly lift it up vertically and tilt it forward to the desired position. An angle of 20° or 35° is possible.

Fitting to the side of a worktop using the Vario base holder.

THE WORKTOP REMAINS CLEAR AND TOOLS ARE ALWAYS READY TO HAND.





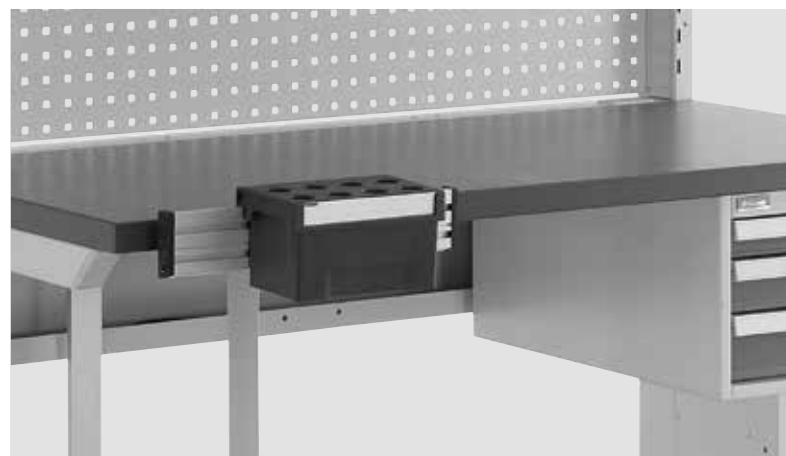
The Multifix rail can be secured with a locking screw.



Whether vertical ...



... or ergonomically tilted.



Can be fitted to all GARANT worktops.

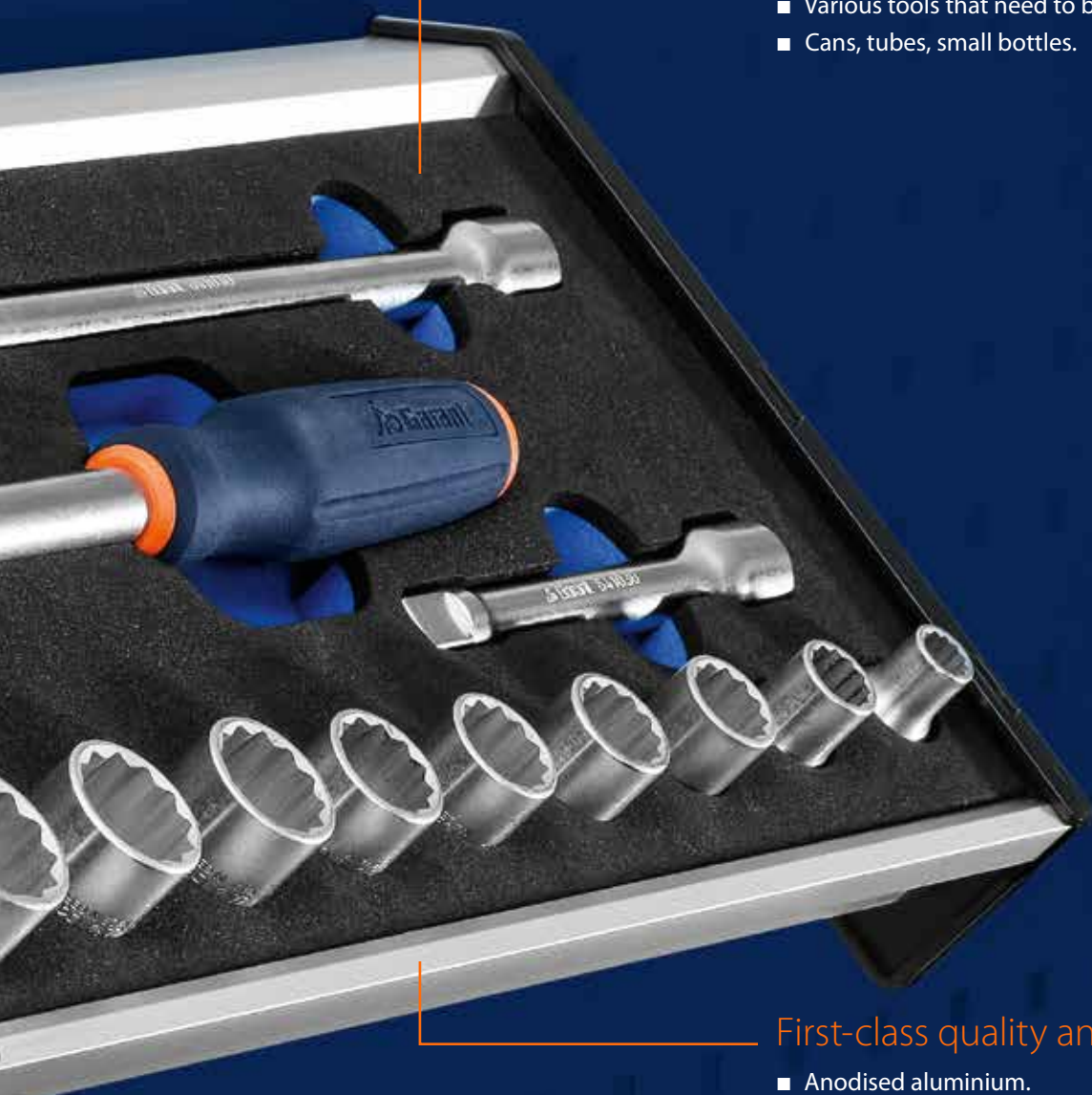
The GARANT Shadowboards.

PERFECT FOR USE WITH THE GARANT EASYFIX SYSTEM.

Two positions

- Options for attaching on both aluminium sides, thus can be attached horizontally or at an angle of 45°.
- Tools are ready to hand and can be removed in an ergonomic manner.
- Can be fitted to a perforated panel by attaching to a base plate (order separately).



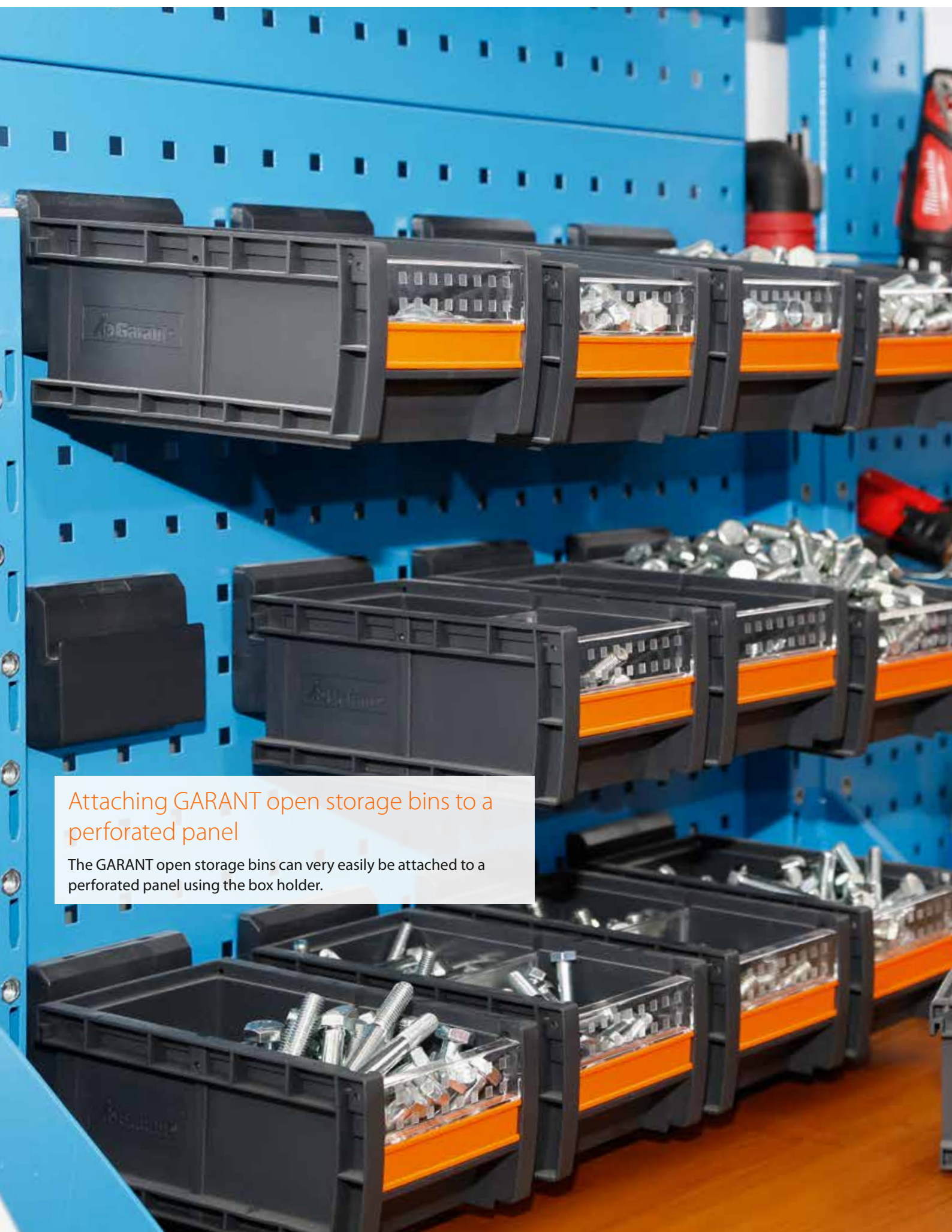


For convenient storage of

- Rigid foam inlays.
- Various tools that need to be accessed quickly.
- Cans, tubes, small bottles.

First-class quality and design

- Anodised aluminium.
- Low weight.
- Timeless design in anthracite.
- Absolutely abrasion-free and durable.
- For mobile use – simply remove from the base plate and take to the point of use.



Attaching GARANT open storage bins to a perforated panel

The GARANT open storage bins can very easily be attached to a perforated panel using the box holder.



GARANT Easyfix Shadowboards, open storage bins and boxes.

KEEPING ORDER MADE EASY.

Shadowboards

Using the base plates, they can be fitted to a perforated panel or a Multifix rail, either horizontally or at an angle of 45°.



Attaching GARANT open storage bins to the Multifix rail

The GRANT open storage bins can be attached directly to the Multifix rail.



Neat storage for small parts

The Easyfix plastic boxes and the bottle / can holder create storage space on the perforated panel and give visual clarity.





Useful information about GARANT perforated panels.

THE GARANT EASYFIX HOOKS AND HOLDERS FIT EVERYWHERE.

All GARANT perforated panels have the same hole pattern, square holes size 9x9 mm on a 37 mm grid.

Watch out for the hole pattern pictogram in our catalogue.



Perforated panels in cupboards

Our Easyfix hooks and holders can be used to create clear and neat storage for tools and equipment in cupboards by fitting them to pull-out frames and built-in perforated panels.



Perforated panels on mobile workshop equipment

You don't have to do without order and ergonomic access to tools even when on the move. Whether assembly stool or roller cabinet: Easyfix fits wherever there is a perforated panel grid.



Perforated panels on GARANT devices

Many of our GARANT devices have a perforated panel grid, on which the GARANT Easyfix system can be used.



A real eye-catcher.

ALWAYS READY TO HAND, WHENEVER YOU NEED YOUR TOOLS.





Quick and secure storage, ready to hand.

Our GARANT ladders permit ergonomic access to tools while you are working without you having to descend the ladder. Everything is safely stored and ready to hand – even delicate camera lenses.

Whether for work or hobby.

ALWAYS HAVE THE RIGHT TOOL READY TO HAND.



Everything in good order

Whether DIY enthusiast or master craftsman – it is essential to keep a workshop neat and tidy. You can only do a good job if the correct tools can be located and accessed quickly.



Where every second counts !

A LENGTHY SEARCH IS THE LAST THING YOU NEED.





Careful storage of tools in the GARANT Tool UNIT.

FOR ERGONOMIC ACCESS TO TOOLS WHEN FITTED TO THE GARANT MULTIFIX RAIL.



Clear and ergonomic

The GARANT Tool UNIT can easily be fitted to the Multifix rail and be tilted to an ergonomically advantageous position using the Vario base holder.



As versatile as your requirements.

CLEAR STORAGE FOR ALL KINDS OF APPLICATIONS.





A highlight for any workshop !

SEE AT A GLANCE WHERE YOUR TOOLS ARE STORED AND HAVE THEM READY TO HAND FOR ANY TASK.





Everything in its place.

UNCLUTTERED, CLEAN AND NEAT. JUST LIKE YOUR WORK.







THAT'S EASYFIX: EVEN WITH MORE THAN 100 HOOKS AND HOLDERS YOU WILL BE ABLE TO KEEP A CLEAR OVERVIEW.

Our eShop will make it quick, easy and convenient to find exactly the right Easyfix hook or holder to keep your tools in order.

www.hoffmann-group.com

This advertising brochure, its graphic layout and the item numbering system used are protected by copyright. Reprinting and reproduction of any kind – even as extracts – is permitted only with the written authorisation of Hoffmann GmbH Qualitätswerkzeuge, 81241 Munich, Germany. We reserve the right to correct errors and make changes.